

# HOW TO USE YOUR ESSENTIAL CHECKLIST WITH YOUR Project Planner

To help save you time with your home electrical design, here is your handy Project Planner. Simply allocate all the electrical accessories you want for each room so that your home is built exactly how you envisage it. You can download more Project Planners at [clipsal.com/projectplanner](http://clipsal.com/projectplanner).

If you are building or renovating by yourself, you can use the Project Planner to create a design to suit your lifestyle. Use the Planner as a reference for your contractors throughout the building process. If you are using a builder or architect, draw up your room plans with the Project Planner and they can bring your ideas to reality. Your dream home starts by putting pen to your Planner.

## Step 1

Tear out this Project Planner and write in your contact details.

Name:

\_\_\_\_\_

Address:

\_\_\_\_\_

\_\_\_\_\_

Phone Number:

\_\_\_\_\_

Record your details above so you are able to give this completed Project Planner to your electrical contractor for quoting.

## Step 2

Read through pages 10-48 of the Checklist looking at every room of your home.

Read pages 52-74 of the Checklist and decide your preferences on energy efficient solutions, style and colour.

Record your product preferences on the Project Planner as you go.

## Step 3

Read through pages 82-101 of the Checklist for the various home networking and automation options.

Record your home network and automation preferences (C-Bus, StarServe, Multi-room Audio) on this Project Planner.

[clipsal.com](http://clipsal.com)

Everything electrical is only a click away

# PROJECT ESSENTIAL checklistplanner



[clipsal.com](http://clipsal.com)

**CLIPSAL**  
by Schneider Electric

# EASY HOME ELECTRICAL PLANNING WITH CLIPSAL

## Home electrical planning is easy with Clipspec

Planning your home electrical is easy with a Clipspec consultation, exclusively available through builders and Clipsal Powerhouses. If you live too far away, you can even have a remote consultation over the Internet. An expert Clipspec consultant can walk you through it over the phone (ADSL2+ connection required).

With the help of a Clipspec consultant, you can design all your electrical needs for your home in one simple meeting. Clipsal's Clipspec software is a powerful design program that creates a custom electrical plan, matching your home and lifestyle perfectly.

This combination of software and expert advice ensures your electrical plan is just right and prevents problems, such as power outlets and switches being installed in the wrong place.

During a Clipspec consultation you choose and change your selections at the click of a button, and provided with an exact costing, so you can work within your budget.

When your consultation is finished, you'll be provided with a tailored electrical plan that can be used by your builder. The plan even includes catalogue numbers, ensuring your builder orders exactly the right products for your home.

When a Clipspec participating builder refers you, your consultation is free. Ask your builder if they are part of the Clipspec network.

If you require expert advice about your home's electrical plan, make an appointment with a Clipspec consultant at your local Powerhouse. Go to [www.clipsal.com/clipspec](http://www.clipsal.com/clipspec) or call your local Clipsal Powerhouse.

## Your next steps

The Essential Checklist will give you plenty to think about when it comes to your home plans. Take notes, circle products or mark your pages; whatever your preferred method, you will have an array of products in mind. What's the next step? There are four possible scenarios, depending on how you have chosen to build or renovate your home:

1. You've got a builder
2. You're using an architect
3. You're the owner and builder
4. You need a Clipsal Endorsed Contractor.

For more information on these scenarios please see page 6 in your Essential Checklist.

## Where can you see more Clipsal products?

- Visit a Clipsal Powerhouse Display Centre.
- Visit [clipsal.com](http://clipsal.com)
- Speak to an expert - your builder, architect, electrician or integrator.
- Go to builder display villages; they probably have Clipsal products installed.
- Look for Clipsal displays at home shows across Australia.

## Clipsal in action at your nearest Powerhouse

Clipsal Powerhouses and Selection Centres are open 9am to 5pm Monday to Friday. Call now for a Clipspec consultation appointment and walk through the showroom to see Clipsal products on display.

**NSW**  
78 Waterloo Road  
MACQUARIE PARK NSW 2113  
Ph: (02) 9125 9450

**GOLD COAST\***  
Unit 7, 82-86 Minnie Street  
SOUTHPORT QLD 4215  
Ph: (07) 3635 7486

**VIC\*\***  
83-89 Queens Parade  
NORTH FITZROY VIC 3068  
Ph: (03) 9207 3200

**QLD**  
80 Schneider Road  
EAGLE FARM QLD 4009  
Ph: (07) 3635 7486

**SA**  
6/69 Sir Donald Bradman Drive  
HILTON SA 5033  
Ph: (08) 8161 0751

**WA**  
55 Salvado Road  
SUBIACO WA 6008  
(located in Home Base Expo)  
Ph: (08) 9347 3570

\* Selection Centre

\*\* We are planning to relocate, please visit [clipsal.com/powerhouse](http://clipsal.com/powerhouse) for latest details.

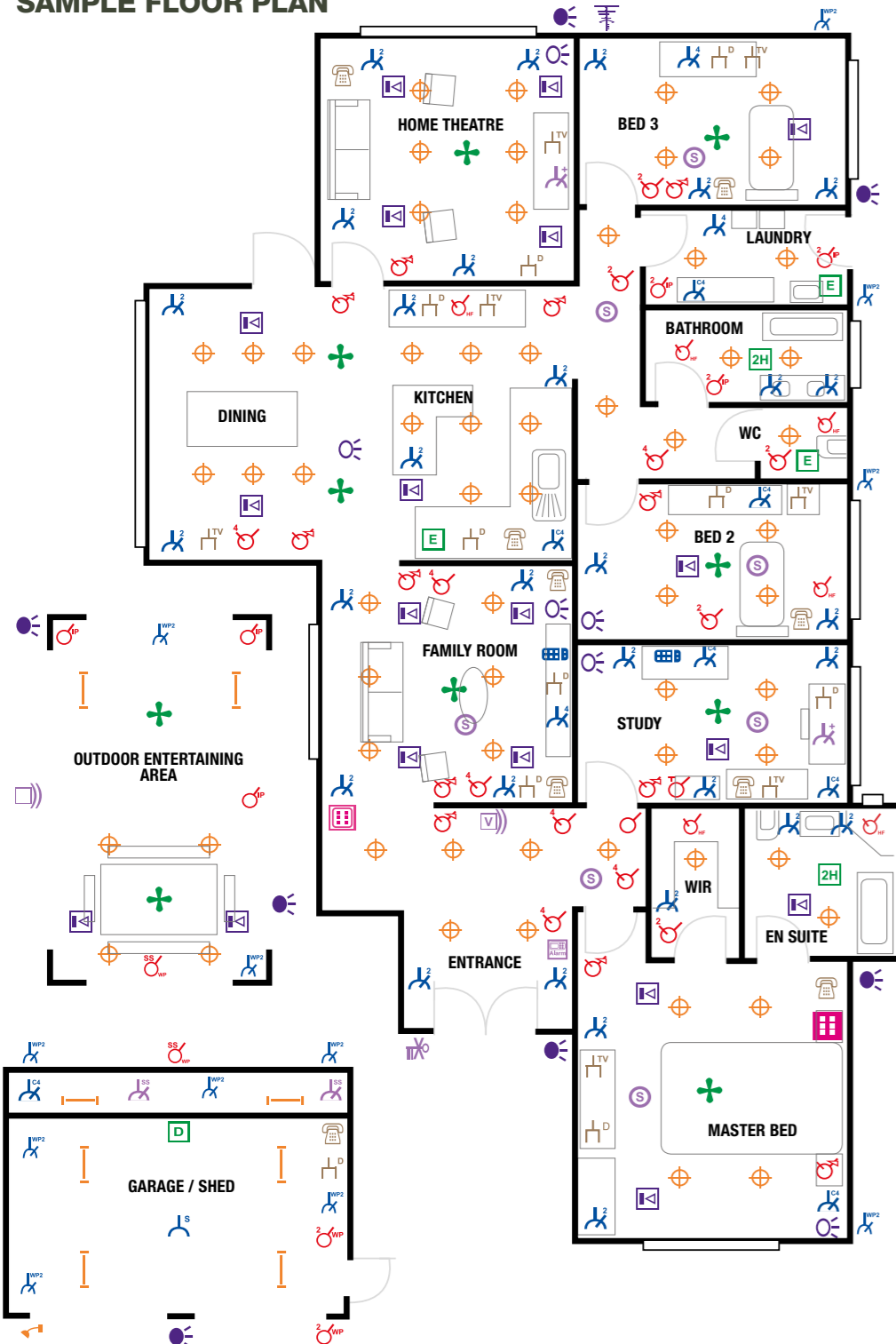
© 2012 Schneider Electric. All rights reserved.

**CLIPSAL**  
by Schneider Electric

# ESSENTIAL CHECKLIST PROJECT PLANNER

- I would like to include:
- C-Bus® Home Control
  - Wiser™ Remote Home Control
  - Multi-Room Audio
  - StarServe™ (audio, data & video)

## SAMPLE FLOOR PLAN



## STYLE



SWITCHES	STYLE	COLOUR	ENTRANCE	FAMILY	KITCHEN	THEATRE	DINING	STUDY	BATH 1	BATH 2	BATH 3	BED 1	BED 2	BED 3	BED 3	BED 4	BED 5	OUTDOORS	POOL	GARAGE	SHED	
1 Button Switch																						
2 Button Switch																						
3 Button Switch																						
4 Button Switch																						
5 Button Switch																						
6 Button Switch																						
Dimmer & Switch																						
Timer																						
Sunset Switch																						
Hands Free Sensor Switch																						
Water Resistant Switch Indoor																						
2 Button Water Resistant Switch Indoor																						
2 Button Weather Resistant Switch Outdoor																						
<b>HOME AUTOMATION SWITCHES</b>																						
DLT™																						
Black & White Touch Screen																						
Colour Touch Screen																						
Outdoor Motion Sensors																						
Indoor Motion Sensors																						
Energy Consumption Monitor																						
<b>POWER POINTS</b>																						
Single																						
Double																						
Quad																						
Single + 1 x Switch																						
Single + 2 x Switch																						
Weather Resistant Power Outlet																						
Powertainment																						
Gangbuster																						
Suspended Power Socket																						
<b>FANS</b>																						
Exhaust Fan																						
Ceiling Sweep Fan																						
Bathroom 3-in-1																						
Ducted Exhaust Fan																						
<b>AUDIO, VIDEO &amp; DATA</b>																						
TV Socket																						
Telephone Socket																						
Data Socket																						
Audio Socket																						
Speakers																						
Antenna																						
<b>SECURITY</b>																						
Alarm System																						
Keyless Entry																						
<b>SAFETY</b>																						
Smoke Detector																						
Safety Switch Power Point																						
Surge Protected Power Point																						
Safety Switch (RCD)																						
<b>LIGHTS</b>																						
Downlight (LED, CFL or Halogen)																						
Waterproof Downlight																						
Fluorescent Light																						
Floodlight																						
External Wall Light																						
Emergency Light																						

\*DLT, Neo, Reflection and Touch Screens are only available with C-Bus®

## COLOUR

- AA** Anodised Aluminium
- AB** Antique Brass
- 3A** Arctic Silver
- BK** Black
- BL** Blue
- BR** Brown
- BA** Brushed Aluminium
- BB** Brushed Brass
- BS** Polished Brass
- CG** Champagne
- CC** Charcoal
- 3S** Chrome Shadow
- CH** Chrome
- CM** Cream
- DS** Desert Sand
- DO** Dove Grey
- EB** Espresso Black
- FB** Florentine Bronze
- GD** Gold
- GP** Gold Plate
- GY** Grey
- GM** Gunmetal
- 1** Neo Grey
- 8** Neo Silver
- 9** Neo Gold
- NU** Nutmeg
- OM** Ocean Mist
- PT** Platinum
- PW** Pure White
- RD** Red
- SP** Silver Plate
- SG** Soft Grey
- SS** Stainless Steel
- WE** White